

KRAMER & DUYVIS

Curved conveyor systems - Components
Kramer & Duyvis B.V.

Spuiweg 24
5145 NE Waalwijk
The Netherlands

[T] +31(0)85 3301140
[F] +31(0)85 3301149
sales@kramer-duyvis.com
www.kramer-duyvis.com

KvK : 63756161
VAT nr : NL855386733B01
Bank nr: ING 00.69.22.804
BIC : INGBNL2A
IBAN : NL49INGB0006922804

K&D BMK Configurator 360 Manual

Version 1.0



Inhoud

1. General.....	2
2. Accessibility Configurator	2
3. BMK Round conveyor Configurator	2
4. Configuration of the 3D model.....	3
5. Set Limits	3

1. General

The K&D Configurator 360 aims to quickly configure 3D models and download them for use in custom 3D designs.

The 3D models can be downloaded as STEP or SAT file.

It is also possible to request an advice or quotation of the configured model.

Standards were assumed when designing the configurator. There are many more options outside the standards. If you want a different belt color, the motor or legs of the support in a different location, shorter side guides, etc., please contact the sales department.

No rights can be derived from the configured models. Upon a quotation request, your configured model will be assessed by Kramer & Duyvis B.V.

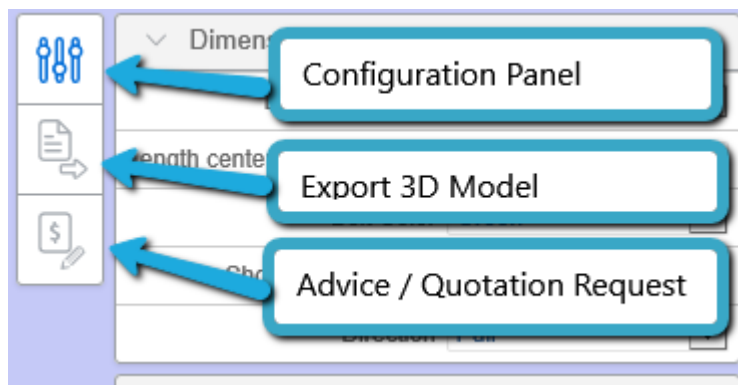
2. Accessibility Configurator

The configurator is accessible from the K&D website where no registration or login is required. The direct link to the BMK configurator is: <http://www.kramer-duyvis.com/en/configurator-type-BMK> .

3. BMK Round conveyor Configurator

After you have clicked on the link you will be redirected to the K&D website.

If you do not see the configurator immediately, press F5 to refresh the page. The first loading time takes on average 10 to 20 seconds. On the left you will find the input screen by which you can configure the belt conveyor.



1. **Configuration panel**, Control panel, this is open by default. If you have exported a 3D model or have made an Advice / Quotation request, you can call up the configuration screen again via this button.
2. **Export 3D Model**, This allows you to export your configured model to a STEP or SAT file.
3. **Advice / Quotation Request**, if you want advice whether your configured model meets the requirements and / or you want a quote, you can do that via this button. The configured model is then saved so that Kramer & Duyvis can assess it.

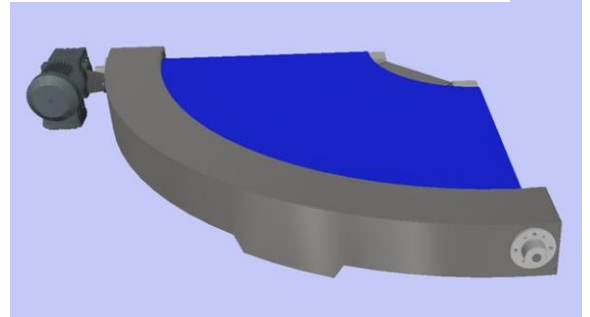
4. Configuration of the 3D model

The fully expanded configuration screen looks like this:



The configuration panel is titled 'Dimensions' and includes the following settings:

- Angle (deg): 90
- Beltwidth (mm): 600
- Outside Radius (mm): 900
- Inner Radius (mm): 300
- Belt Color: Blue (dropdown menu)
- Counter_Clockwise:



By making a choice from the drop-down menus or changing a value, the 3D model will be adjusted immediately. This takes around 1 to 10 seconds.

This direct adjustment is necessary because further options depend on the choices made.

5. Set Limits

A number of rules have been set in the configurator according to our standards. Outside these standards, more is possible. If you are unable to configure your desired model due to limitations of the standards, please contact the sales department of Kramer & Duyvis B.V.

If you have a 3D Design program such as Autodesk Inventor Professional, you can also adjust the downloaded 3D models.

Below you will find the table with the minimum and maximum values that have been processed in the configurator.

Pay attention! If you enter a value outside the limits, it will be adjusted automatically. Always check the values displayed in the configuration panel before you export the model.

BMK Rules	Minimum (mm)	Maximum (mm)
Angle	45-90-180	
Belt Width	200	1600
Outside Radius	500	3500
Inner Radius	300	3200